

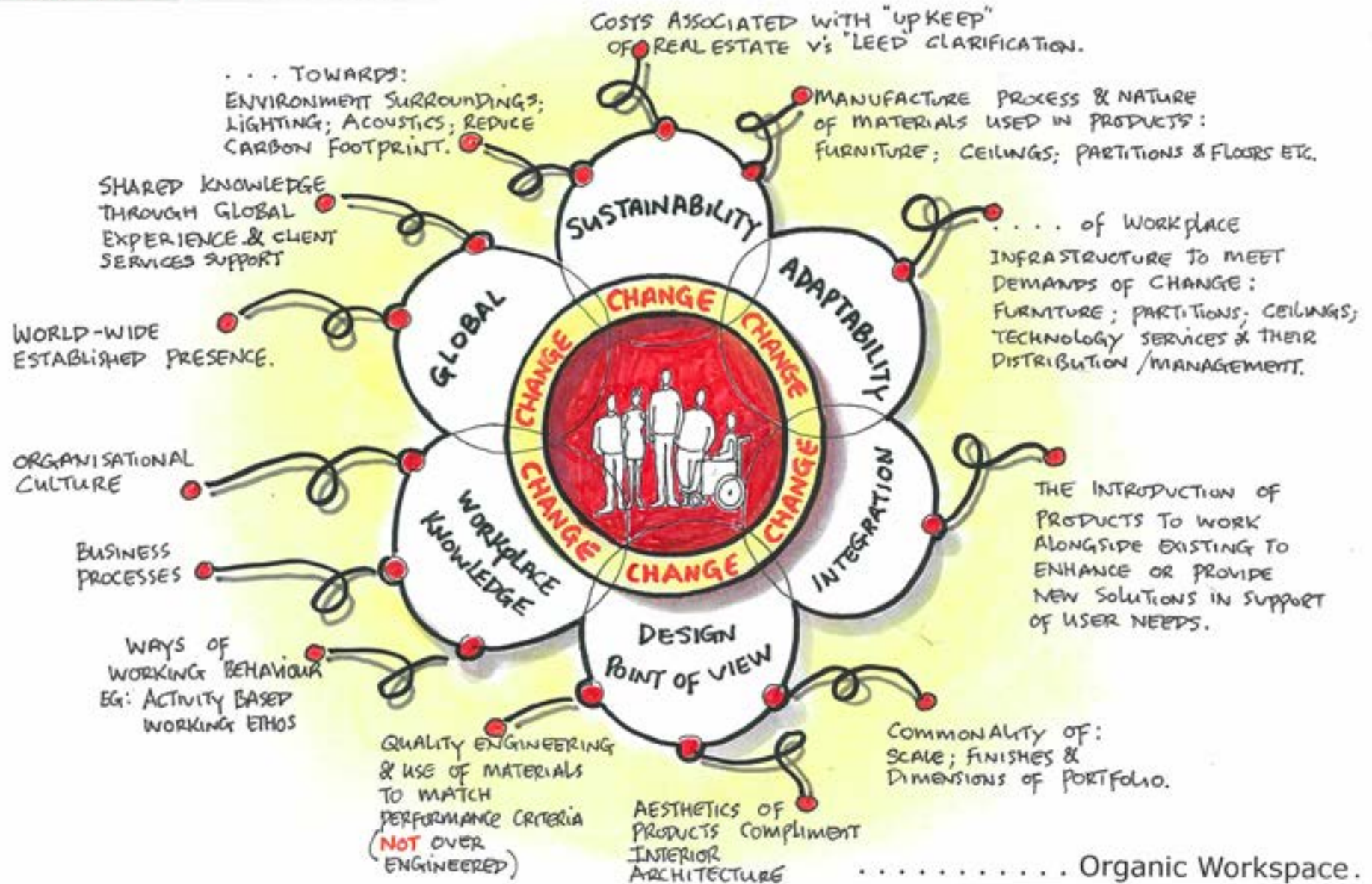
. . . . Organic Workspace



. . . . . Expressing Culture

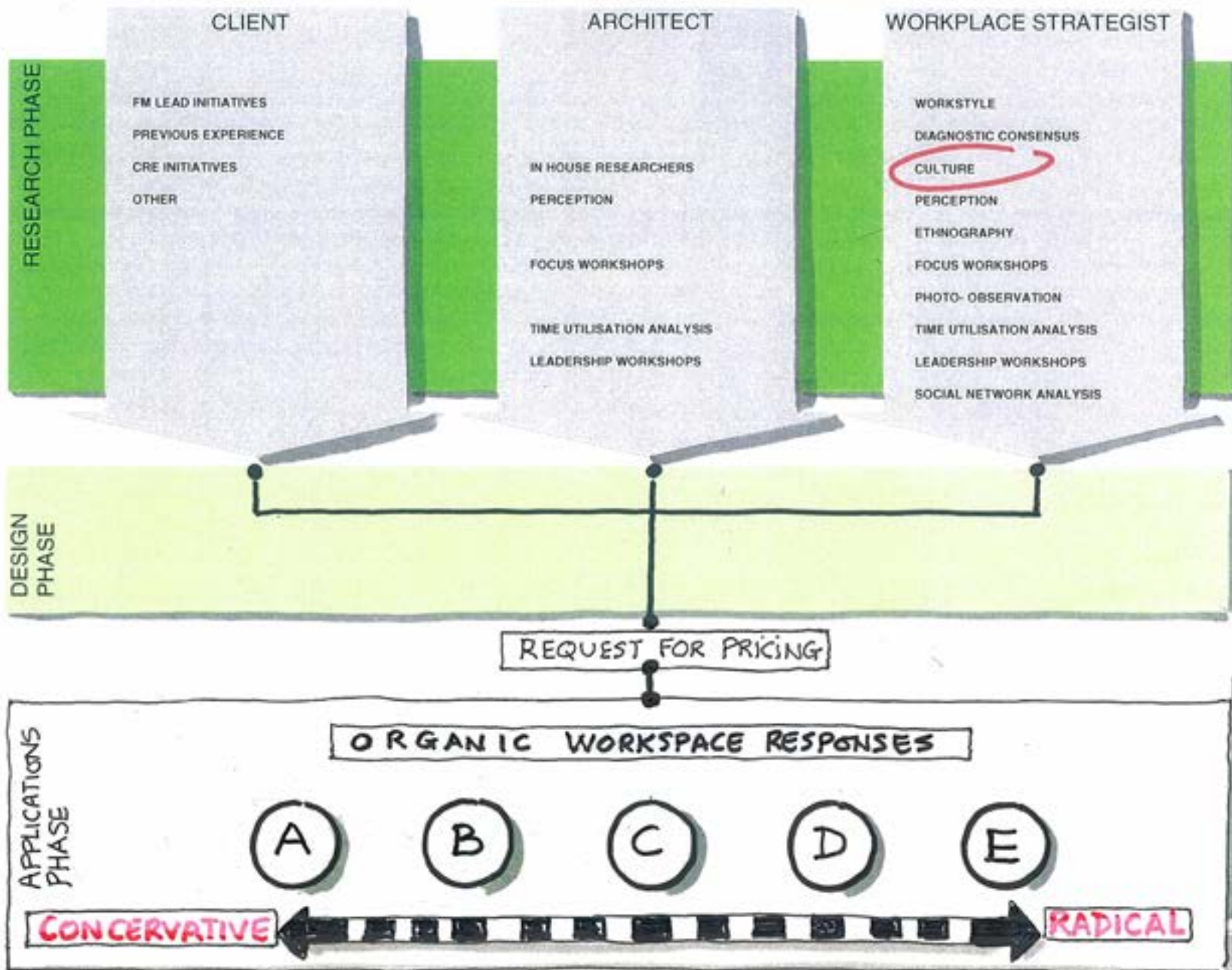
HAWORTH

HAWORTH is . . . . .





# Where Culture sits:



WORKPLACE STRATEGY

CORPORATE POLICIES  
TOWARDS REAL ESTATE  
MANAGEMENT, & USE  
OF SPACE UTILIZATION ETC.



COMPANY  
POLICIES TOWARDS  
SUPPORTING  
CHANGE WITHIN  
OFFICE  
LANDSCAPE

SUSTAINABILITY

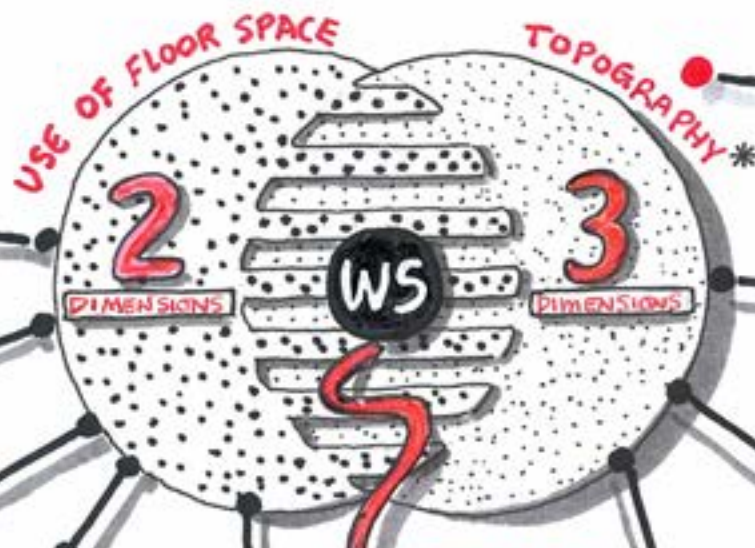
THE NATURE  
OF WORK TASKS  
TO BE CARRIED  
OUT; MENTALITY  
AND WORKER  
BEHAVIOUR

WAYS OF WORKING



# HOW TO EXPRESS CULTURE :

"emotion"... our human response, how we feel about our surroundings.



\* PHYSICAL CHARACTER OF THE WORK PLACE LANDSCAPE WHEN VIEWED SITTING OR STANDING WITHIN OR WALKING PAST THE ENVIRONMENT.

3 \*\* ADJACENCY OF GROUP TO INDIVIDUAL OPEN-PLAN WORK SETTINGS

1 CIRCULATION DISTRIBUTION  
ESTABLISH LOCATION OF PRIMARY WALKWAYS

ENCLOSED WORK SETTINGS  
POSITION SUCH SETTINGS TO SUPPORT: COLLABORATIVE MEETINGS FOR TRAINING USE; PROJECT TEAMS; PRESENTATIONS; 'FOCUS' ROOMS; SOLO WORKING OR GROUP-WORKING ETC.

2 OPEN-PLAN COLLABORATIVE SETTINGS  
ESTABLISH LOCATION OF POTENTIALLY VARIED FORMS OF COLLABORATIVE SETTINGS

8 GROUP/SHARED STORAGE  
DETERMINING PROXIMITY OF STORAGE EITHER CLOSE TO OR AWAY FROM OTHER SETTINGS

WORK SETTINGS  
MENU

11 C.M.F. PHILOSOPHY  
WHAT IS THE APPROACH TOWARDS USE OF: COLOUR; MATERIALS & FINISHES

6 BOUNDARY CHARACTERISTICS  
... WITH REGARD TO: LOCATION; HEIGHT FUNCTION.

5 ESTABLISH THE "MIX" OF WORKSETTING TYPICALS  
... WITH REGARD TO THEIR: FORM; STYLE; FUNCTIONALITY & QUANTITY

\*\* "GROUP"... meaning COLLABORATIVE SETTINGS



# WORKSETTINGS MENU

OPEN WORKSPACE	Closed Worksp.	open Collaborative	closed Collaborative	FOCUS	FORMAL MEETING	SOCIAL LOUNGE	WELCOME	"SUPPORT"
OW1:	CW1:	OC1:	CC1:	F1:	FM1:	SL1:	W1:	S1:

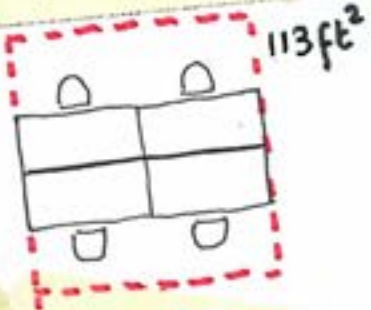
**OW1:**

OPEN WORKSPACE:

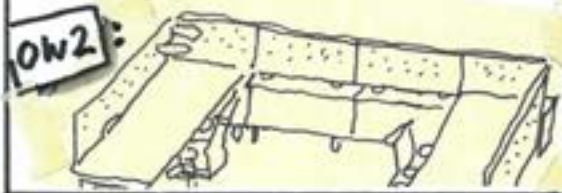
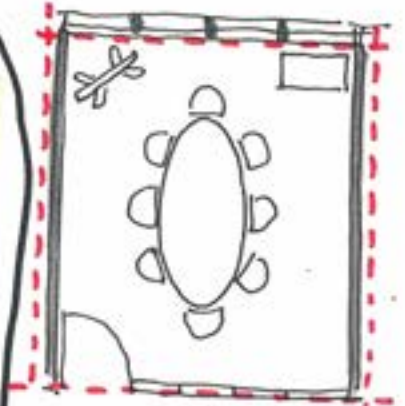
**OW3:**

OPEN COLLABORATIVE:

FORMAL MEETING: **FM1:**



**OW5:**



**OW2:**



**OW4:**

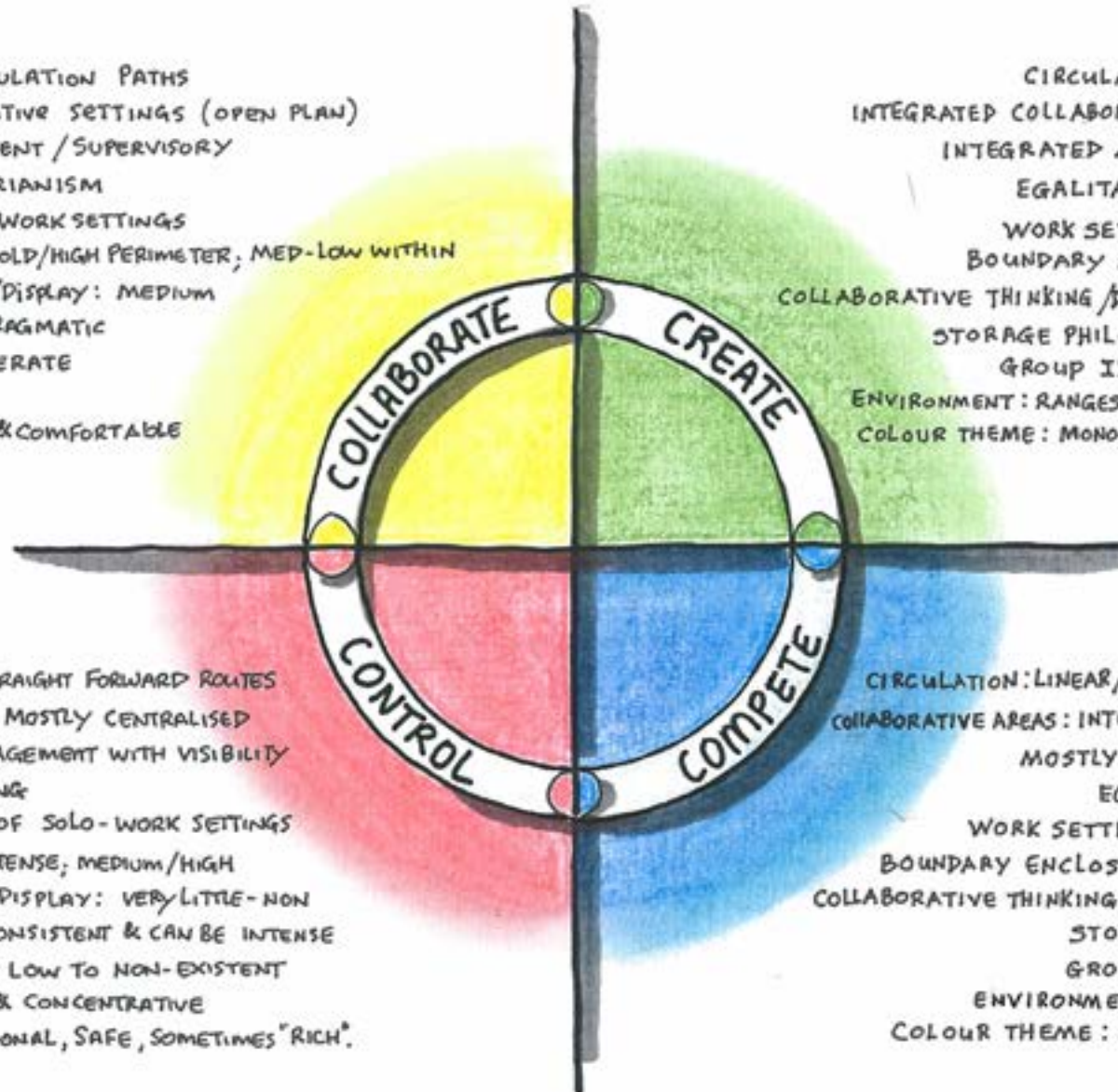




# WORK ENVIRONMENT IMPLICATIONS :

- 1 SIMPLE ORDERLY CIRCULATION PATHS
- 2 INTEGRATED COLLABORATIVE SETTINGS (OPEN PLAN)
- 3 INTEGRATED MANAGEMENT / SUPERVISORY
- 4 NON-EXISTENT EGALITARIANISM
- 5 MEDIUM REPETITION OF WORK SETTINGS
- 6 BOUNDARY ENCLOSURE: BOLD/HIGH PERIMETER; MED-LOW WITHIN
- 7 COLLABORATIVE THINKING/DISPLAY: MEDIUM
- 8 STORAGE PHILOSOPHY: PRAGMATIC
- 9 GROUP IDENTITY: MODERATE
- 10 ENVIRONMENT: CALM
- 11 COLOUR THEME: WARM & COMFORTABLE

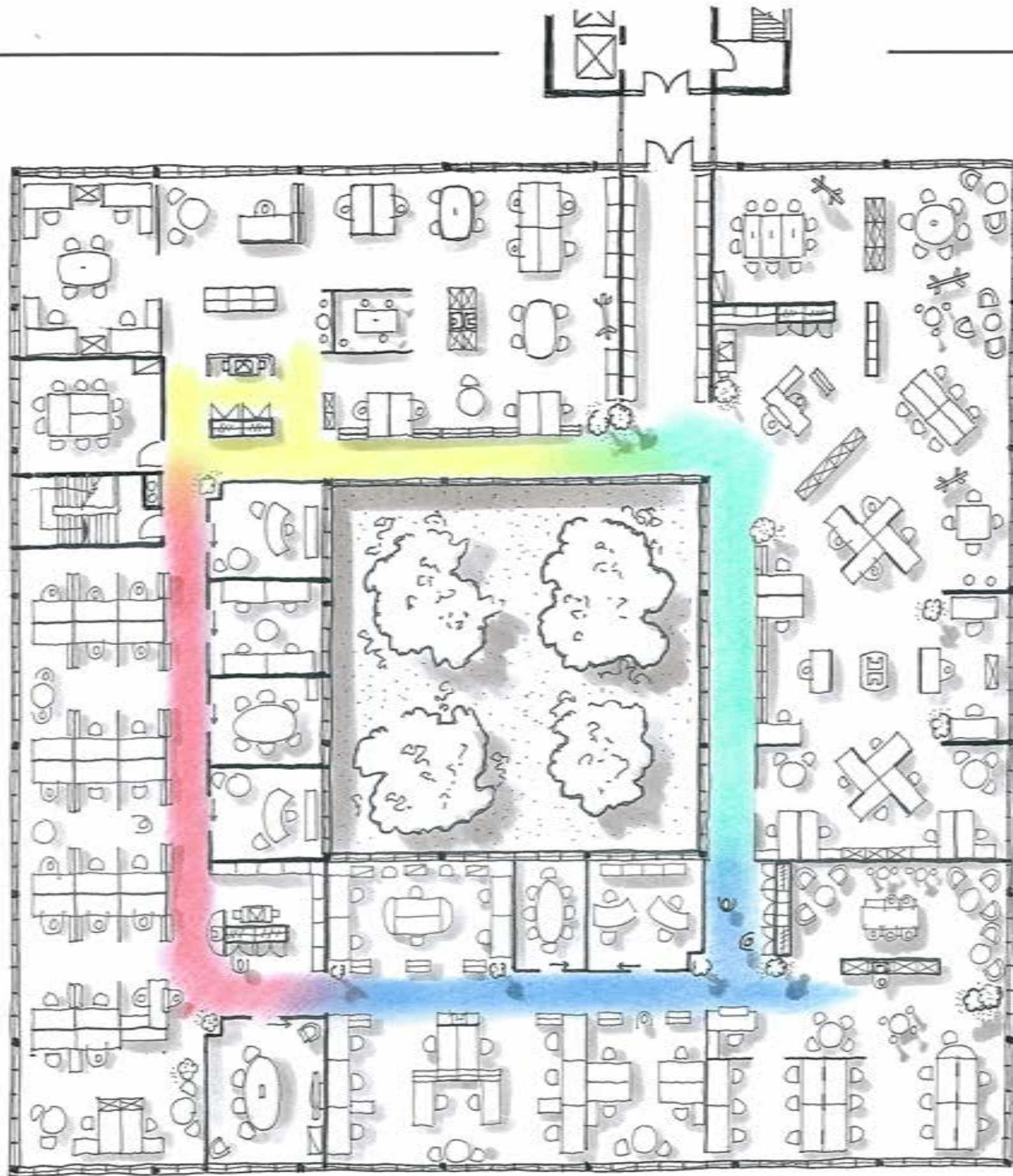
- 1 CIRCULATION: LINEAR, STRAIGHT FORWARD ROUTES
- 2 COLLABORATIVE SETTINGS: MOSTLY CENTRALISED
- 3 MOSTLY "DETACHED" MANAGEMENT WITH VISIBILITY
- 4 EGALITARIANISM: STRONG
- 5 SIGNIFICANT REPETITION OF SOLO-WORK SETTINGS
- 6 BOUNDARY ENCLOSURE: INTENSE; MEDIUM/HIGH
- 7 COLLABORATIVE THINKING/DISPLAY: VERY LITTLE-NON
- 8 STORAGE PHILOSOPHY: CONSISTENT & CAN BE INTENSE
- 9 GROUP IDENTITY: VERY LOW TO NON-EXISTENT
- 10 ENVIRONMENT: QUIET & CONCENTRATIVE
- 11 COLOUR THEME: TRADITIONAL, SAFE, SOMETIMES "RICH"



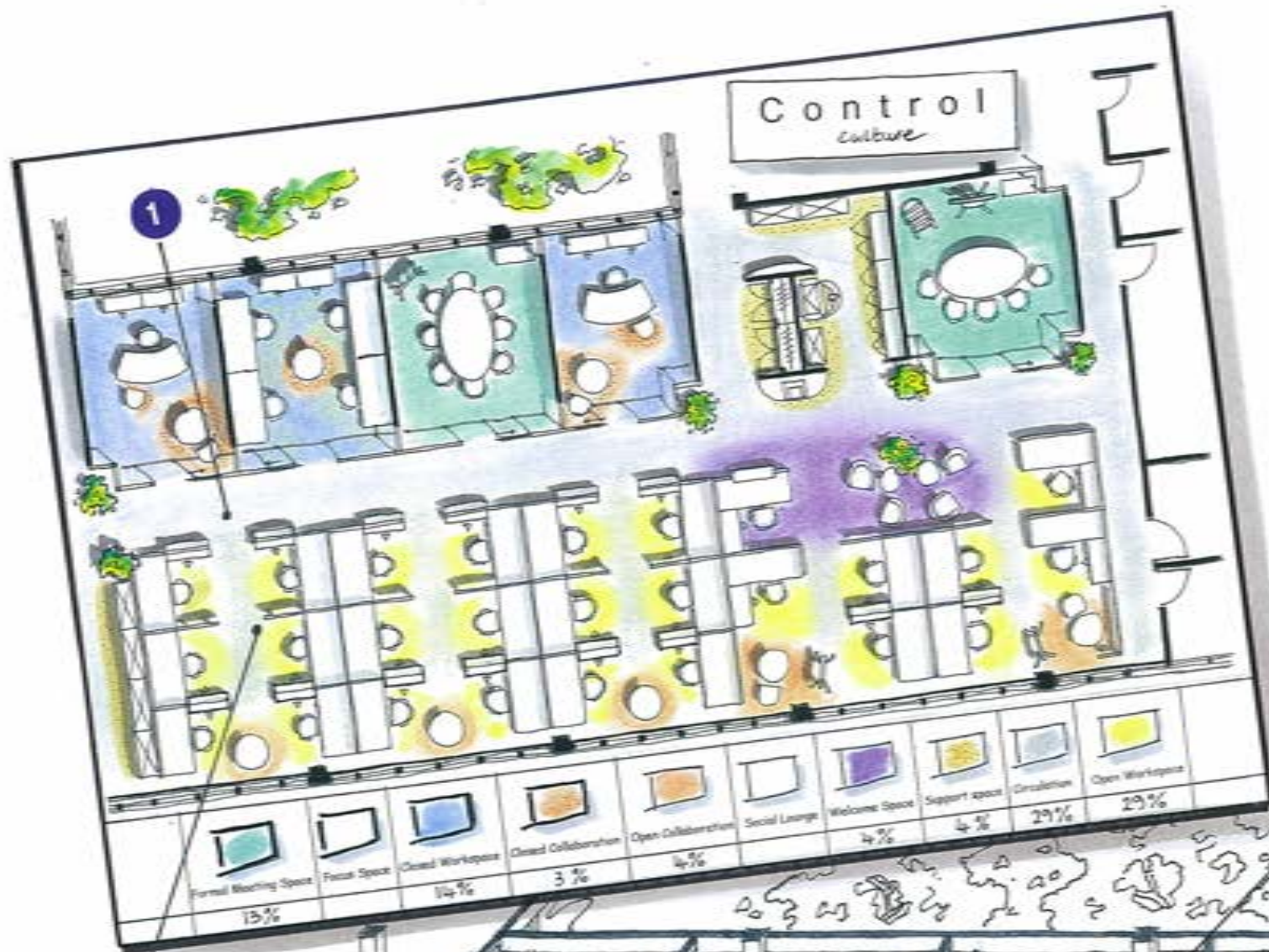
- CIRCULATION PATHS: ORGANIC STYLE 1
- INTEGRATED COLLABORATIVE SETTINGS: ANYWHERE 2
- INTEGRATED MANAGEMENT/SUPERVISORY 3
- EGALITARIANISM: NON-EXISTENT 4
- WORK SETTINGS: VARIED/ECLECTIC 5
- BOUNDARY ENCLOSURE: LOW - NONE 6
- COLLABORATIVE THINKING/DISPLAY: HIGH, ARTIFACTS 7
- STORAGE PHILOSOPHY: VARIED APPROACH 8
- GROUP IDENTITY: VERY IMPORTANT 9
- ENVIRONMENT: RANGES FROM "HUB-HUB" TO QUIET 10
- COLOUR THEME: MONOCHROMATIC OR COLOURFULL 11

- CIRCULATION: LINEAR/STRAIGHT FORWARD ROUTES 1
- COLLABORATIVE AREAS: INTEGRATED/CENTRAL/ADJACENT 2
- MOSTLY INTEGRATED MANAGEMENT 3
- EGALITARIANISM: MODERATE 4
- WORK SETTINGS: MEDIUM REPETITION 5
- BOUNDARY ENCLOSURE: MEDIUM/LOW/NONE 6
- COLLABORATIVE THINKING/DISPLAY: MEDIUM-HIGH 7
- STORAGE PHILOSOPHY: VARIED 8
- GROUP IDENTITY: IMPORTANT 9
- ENVIRONMENT: CAN BE QUITE NOISY 10
- COLOUR THEME: ENERGIZING WITH "ACCENTS" 11



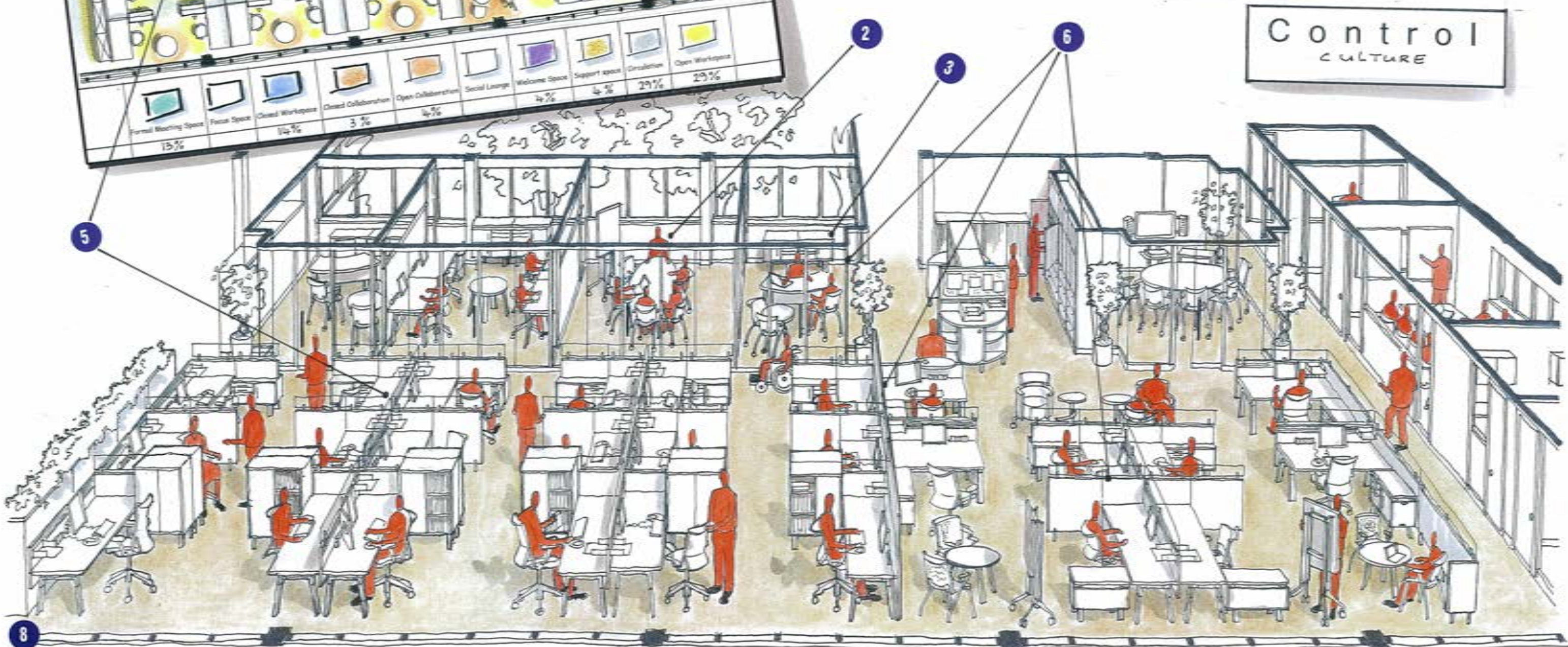






**Work Environment Implications :**

1. Circulation : liner, straight forward routes
2. Collaborative settings : mostly centralised
3. Mostly "detached" management with visibility
4. Egalitarianism : strong
5. Significant repetition of task-based work settings
6. Boundary enclosure : intense, height : med/high
7. Collaborative thinking/display : very little
8. Storage philosophy : consistent, can be intense
9. Group identity : very low to non-existent
10. Environment : quiet & concentrative
11. Colour theme : traditional, safe, sometimes rich

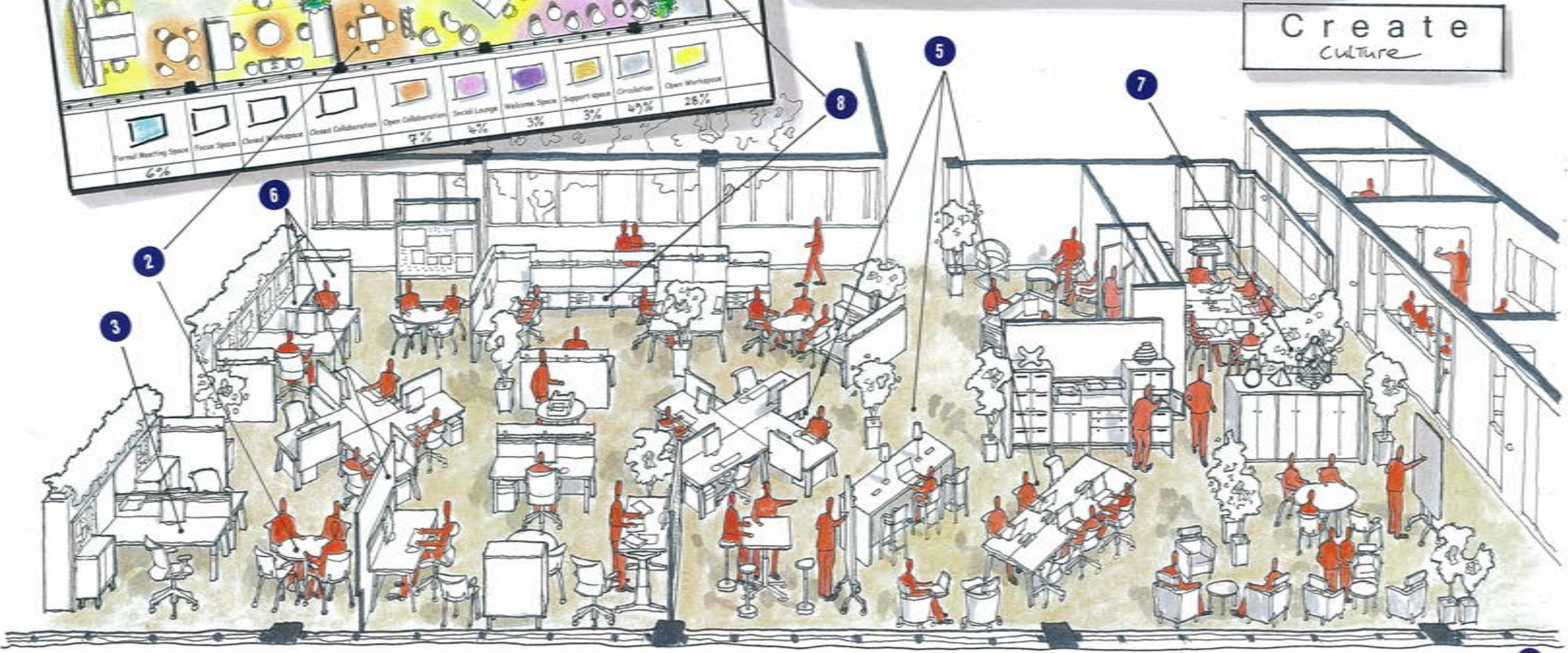
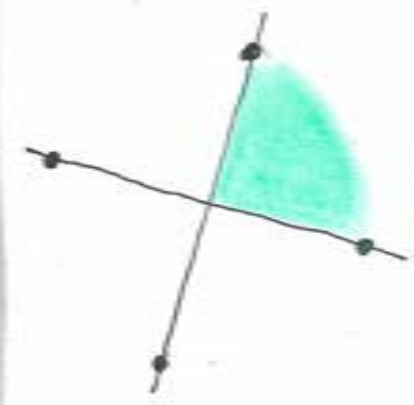






**Work Environment Implications :**

1. Circulation paths : organic style
2. Collaborative settings : integrated anywhere
3. Integrated management
4. Egalitarianism : non-existent
5. Work settings : varied/eclectic
6. Boundary enclosure : can be varied to support user needs
7. Collaborative thinking/display of artefacts : high
8. Storage philosophy : varied approach
9. Group identity : very important
10. Environment : ranges from "hub-hub" to quiet
11. Colour theme : monochromatic or colourful





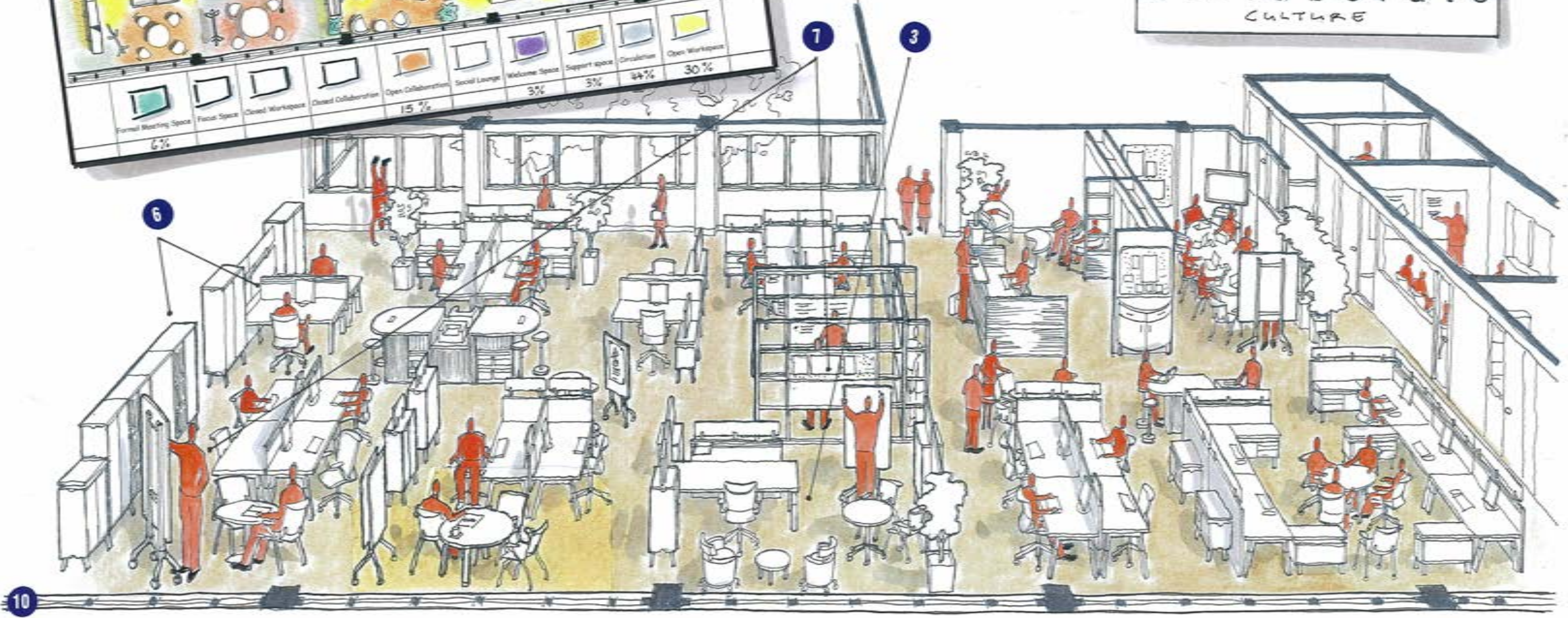


**Work Environment Implications :**

1. Simple orderly circulation paths
2. Integrated collaborative settings
3. Integrated management
4. Non-existent egalitarianism
5. Medium repetition of work settings
6. Boundary enclosure : High/bold perimeter medium-low within
7. Collaborative thinking/display : medium
8. Storage philosophy : pragmatic
9. Group identity : moderate
- 10 Environment : calm
11. Colour theme : warm & comfortable



**Collaborate**  
CULTURE

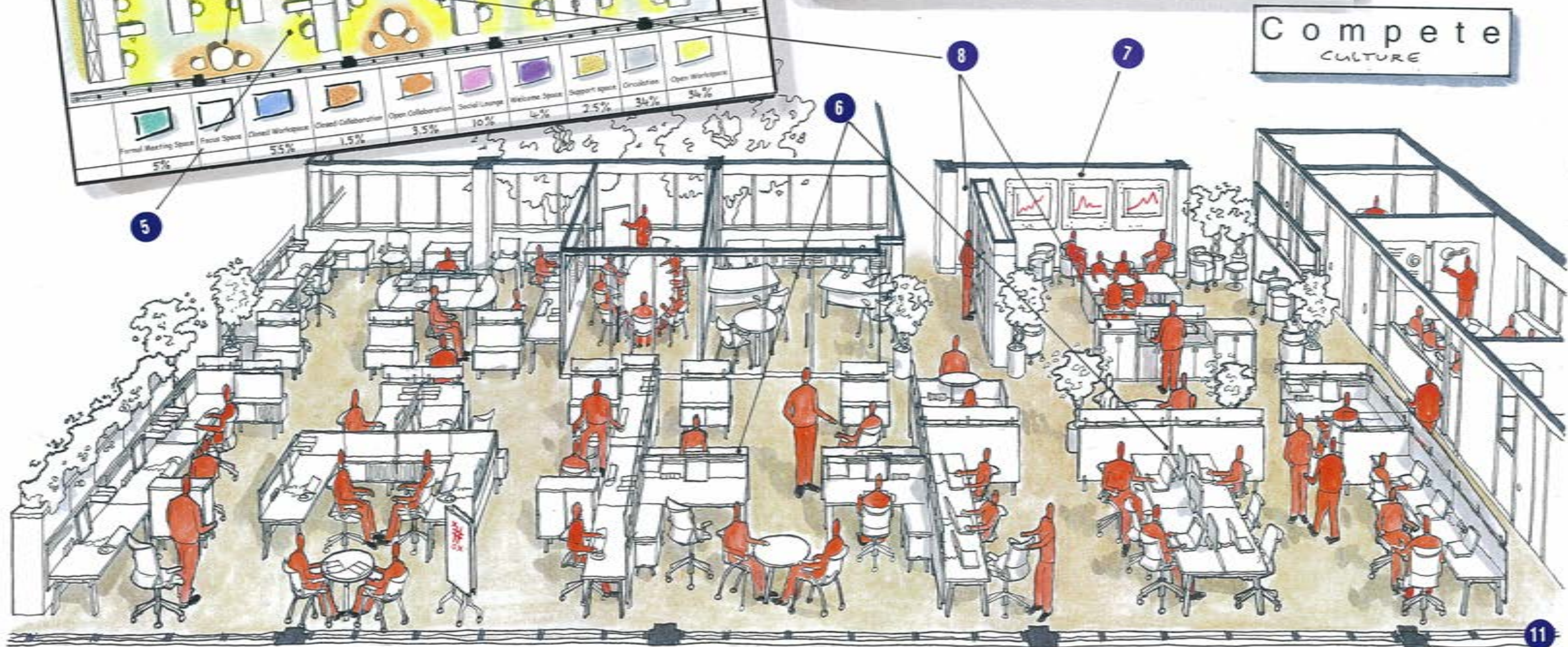
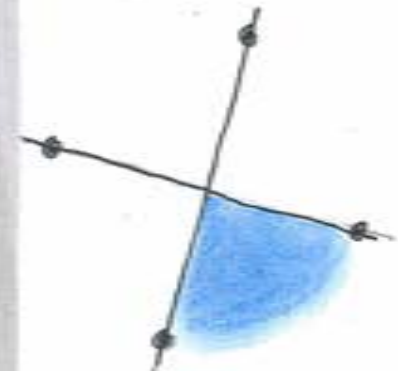






**Work Environment Implications :**

1. Circulation : linear, straight forward routes
2. Collaborative areas : integrated/central & adjacent
3. Mostly integrated management
4. Egalitarianism : moderate
5. Work settings : medium repetition
6. Boundary enclosure : medium intensity, medium/low height
7. Collaborative thinking/display : medium/high
8. Storage philosophy : varied approach
9. Group identity : important
10. Environment : can be noisy
11. Colour theme : energizing with accents







- Work Environment Implications :**
1. Circulation : Organic/linear routes
  2. Collaborative areas : integrated/central & adjacent
  3. Management : work anywhere
  4. Egalitarianism : non-existent
  5. Work settings : varied/eclectic
  6. Boundary enclosure : varied
  7. Collaborative thinking/display : as & where necessary
  8. Storage philosophy : pragmatic
  9. Group identity : moderate
  10. Environment : calm to "hub-bub"
  11. Colour theme : various interpretations.

